



COMPACT POSITIONING CONTROLLER CPS5

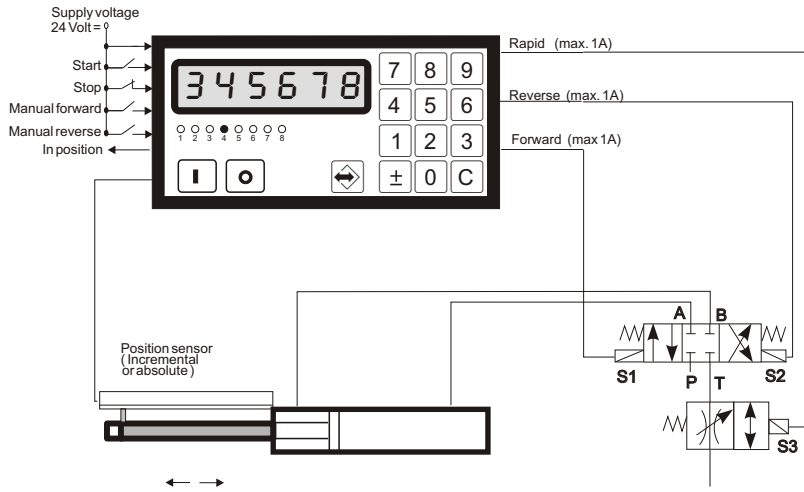
- For positioning AC motors in Posistop version or with frequency converter
 - Easily adapted to various frequency converters
 - Position sensing using incremental or absolute encoders
 - Direct length preset (key in - start)
 - Up to 8 positions may be stored
 - Automatic rapid/creep cycling and brake actuation
 - Highly legible LED display (6-digit, red, 14 mm high)
 - Play compensation and loop travel
 - Resolution programmable to display in engineering units
 - Supply voltage 18 V - 32 V
 - Built-in encoder supply 300 mA, 5 V or 24 V
 - Compact size (144x72x111mm (WxHxD))
- 8 digital outputs 24 V, for
 - Rapid traverse forward/reverse
 - Creep speed forward/reverse
 - Actuate brake
 - Position reached
 - Fault
 - 8 digital inputs 24 V, for
 - Manual jog
 - Start, Stop
 - Reference (Home)
 - Zero set
 - Keypad disable



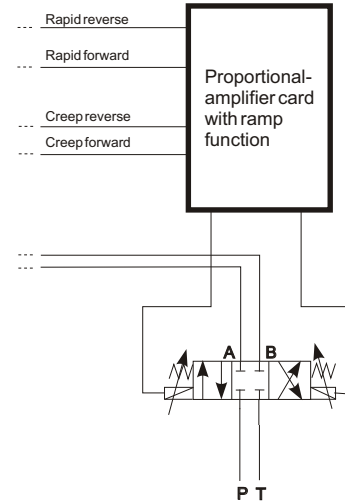
Ordering code

- | | |
|-----------|---|
| CPS 5.101 | Use with incremental encoders |
| CPS 5.201 | Use the absolute encoder having SSI interface |
| CPS 5.401 | Use with magnetostrictive transducer |

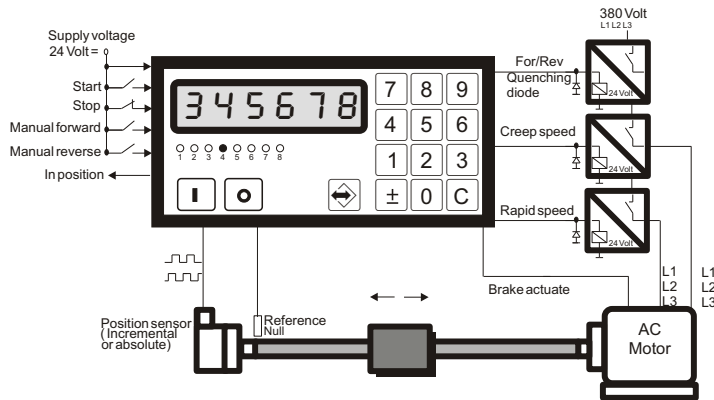
Rapid/Creep Control



Proportional-Valve



Pole Changing Motor



Motor with frequency converter

